

TPS SUPERINTENDENT BULLETIN

Where Excellence Is Achieved Through Each Individual's Success

UPDATE FOR THE WEEK OF 3/25/2019

Please **CLICK BELOW** to get the **DIGITAL BACKPACK** information for the listed school:

[BG](#)

[TIS](#)

[TMS](#)

[THS](#)

BUDGET MESSAGE:

Both the Board of Education and the Town Council have worked hard this budget season. I have worked in due diligence to reach the Town's possible reduction to the BOE Adopted budget for 2019-2020. While I was able to bring the BOE budget to a 1.24%, I am unable to bring it to the proposed .54% increase without further impacting staff. Therefore, tonight if the Town Council adopts a .54% for the BOE the following will be reduced/impacted:

- Three (3) teacher reductions from the elementary grades (K-6)
- Two (2) teacher reductions from secondary grades (7-12)
- Increase in Pay to Participation Fees for Sports
- Reduction in music/art budgets/clubs programs
- SRBI/RTI positions that would have had a preventative role in special education designations and outplacements

In addition, to bring the budget to a 1.24% the following was reduced or eliminated from the BOE Adopted Budget:

- Curriculum Director
- Textbooks, curriculum materials, instructional equipment,
- Other areas of logistical importance (audit, legal, consulting, postage, printing, athletic officials, etc.).

There are two important meetings **tonight** (3/26) that address this budget (the *second* is where the decision will likely be made tonight):

- 1) **5:00 PM** — Special Meeting of the Board of Education. Location: **Tolland Public Library Program Room.**
- 2) **6:00 PM** – Town Council Special Meeting – Consideration of the Town Council's Proposed FY 2019-2020 Budget and Approval of Budget Resolution. Location: **Hicks Memorial Building, 6th Floor, Council Chambers** – if there is a larger group than can be accommodated in this room it will move to the Tolland Public Library Program Room.

Birch Grove FOUNDATION

Community Meeting

Wednesday March 27th

7pm at Tolland High School Auditorium



Childcare will be offered for this meeting.
Please email jpalumbo@tolland.k12.ct.us by
March 25, 2019 for childcare.

Table of Contents

Feature Link (click a link to jump to a section)	Description
---	-------------

<u>Superintendent's Weekly Message/Feature</u>	This is the weekly message from the Superintendent. It is usually around some topic related to education and/or the school system.
<u>TPSTV! Tolland Public Schools TV!</u>	This section has videos about the great things happening in the Tolland Public Schools!
<u>Breakfast with the Superintendent Dates/Times/Information</u>	This section provides information about the upcoming Superintendent's Breakfast. These are open meetings with no agenda in which the public is invited to come ask questions, and engage in conversation, about educationally relevant topics.
<u>Budget Blurb & Budget Information</u>	This section provides links and information with regard to the budget of the Tolland Public Schools.
<u>Community Learning Workshops</u>	This section provides information about upcoming workshops for the community.
<u>How to Contact the Superintendent</u>	This section provides information on the ways to communicate with the Superintendent based on urgency/level of importance.
<u>Job Postings</u>	This is a listing of jobs available at this time for the district.
<u>Links</u>	These are links provided from community members as well as links that may provide meaningful information.
<u>Mastery Learning</u>	This section has a brief synopsis of the Mastery Learning philosophy and plan for the district.
<u>Power School and Unified Classroom</u>	This section provides information to guardians and parents about how to access important resources for reviewing their child's grading, scheduling, attendance, and other information.
<u>Social Media Connections and Links</u>	This section provides information on the district social media sites.
<u>Volunteering Information</u>	This section provides information on how to Volunteer in the Tolland Public Schools.
<u>Snow Delays and Cancellations</u>	This section provides information on snow delays, cancellations.
<u>Other Information</u>	Other information submitted by school or community members.

Prom Pictures on the Green for 2019

Please note, the Tolland Green will not be available for Prom Pictures.



**Cannoli with the Cops
Kevin Eklund and Al Beland**

Hold the date!

April 2 and May 9

7:00 pm

Come enjoy some sweet treats and hear a brief presentation from our own School Resource Officer and Resident State Troopers, followed by a Question and Answer session – come and ask whatever is on your mind!

Library Program Room

March 27, 2019 Birch Grove Foundation Community Meeting

Tolland High School Auditorium at 7:00 PM - Childcare will be offered for this meeting. Please email jpalumbo@tolland.k12.ct.us by March 25, 2019 if interested in childcare. Other *INFORMATION SESSIONS* are also available on the dates below – come ask questions and get information (see meeting list on the next page):

Meetings and Information Sessions

Meeting	Location	Date and Time
Superintendent's Breakfast	Superintendent's Office 51 Tolland Green, Tolland CT	March 4th @ 10 AM
BGP Initial Foundation Information Meeting	Birch Grove Gymnasium	March 5 th @ 7 PM
BGP Foundation Information meeting	Birch Grove Library	March 11 th @ 6 PM
Town Meeting	Tolland High School Auditorium	March 27 th @ 7:00 PM
Superintendent's Breakfast	Superintendent's Office 51 Tolland Green, Tolland CT	April 1 st @ 10 AM
BGP Foundation Information meeting	Birch Grove Library	April 8 th @ 6 PM
Superintendent's Breakfast	Superintendent's Office 51 Tolland Green, Tolland CT	May 6 th @ 10 AM
BGP Foundation Information meeting	Birch Grove Library	May 6 th @ 6 PM
Superintendent's Breakfast	Superintendent's Office 51 Tolland Green, Tolland CT	June 3 rd @ 10 AM
BGP Foundation Information meeting	Birch Grove Library	June 10 th @ 6 PM

Tolland Project Graduation



Dear Tolland Parents,

The Tolland Project Graduation committee is asking parents of students in grades K-11 to consider making a donation of any amount to help fund the ALL-NIGHT graduation party that is FREE for seniors. Time passes in the blink of an eye and soon your child will be graduating too. Parents of seniors may donate if they wish, but there's no obligation. Many businesses in Tolland and neighboring towns have already given money to support this special event. With your help, we can provide a SAFE place for our young adults to celebrate their accomplishments with friends before leaving for college and the work force.

Donations can be made 2 ways:

1. Check payable to Tolland Project Graduation; PO Box 366; Tolland, CT 06084
2. With PayPal to TollandProjectGrad@gmail.com

Please feel free to reach out to Dan Carmody (860) 874-5597 with any questions.
Thank you for your anticipated support for our mission: Keeping our graduates safe since 1987
TPG, Inc. is a federally registered 501(c) (3) non-profit organization.

Donations are tax deductible.

[Back to Top](#)

Tolland Public Schools TV!



http://www.tolland.k12.ct.us/t_p_s_television

Check out some of our new TPS Television Videos!

Video link	Description
	STEM FEMs! - Getting more girls into Science Technology

https://youtu.be/XseyIL0IUyg	Engineering and Math!
https://youtu.be/XgC0UWoTCVI	SPIRE - Check out the TPS Phonics Program!
https://youtu.be/KlqfWUJLB2M	REFLEX MATH! A TPS Math Program!
https://youtu.be/uZyXBDthWiM	Pi Day! The TPS make math FUN!
https://youtu.be/w6MYN8yob4A	A Culture of MUSIC in the Tolland Public Schools!
https://youtu.be/Y_cXdn7K-Ls	Math Haka @ TIS
https://youtu.be/L6ercj6dupM	TPS Business Academy

[Back to Top](#)

BREAKFAST WITH THE SUPERINTENDENT



2018- 2019
Tolland Board of Education
51 Tolland Green
10:00 AM

April 1, 2019

May 6, 2019

June 3, 2019

[Back to Top](#)

BUDGET BLURB

BUDGET INFO ON THE WEB:



http://www.tolland.k12.ct.us/board_of_education/budget

Revised - Budget Discussions with Town Council

March 19, 2019

There are three Budget Discussion meetings for the 2019-2020 fiscal year scheduled for March 13th, 14th and 19th at 7:00 p.m. at the Hicks Memorial Municipal Center, 21 Tolland Green.

The 13th and 19th are in the 6th Floor Council Chambers and the 14th is in the Library Program Room. The 3/13 meeting is to discuss the Town Manager's Proposed Budget, the 3/14 is a Joint Meeting to discuss the Board of Education's Proposed Budget and the 3/19 meeting is a General Discussion. Residents are encouraged to attend. Please call the Town Manager's Office at (860) 871-3600 if you have any questions.

BUDGET INFORMATION: http://www.tolland.k12.ct.us/board_of_education/budget

- **On February 13, 2019 the Board of Education adopted the [2019-2020 budget \(click here to view\)](#).**

Data Points

Median Income Tolland Town	\$112,740 (in 2017 Dollars), 2013-2017 (see distribution below)	US Census Bureau (2017)
Median Income Tolland County & State of CT	Tolland County: \$81,312 State of Connecticut: \$73,781	US Census Bureau (2017)
Town Assigned and Unassigned Fund Balance 8 year trend	FY11: \$7,811,267 Actual FY12: \$8,039,037 Actual FY13: \$7,906,567 Actual FY14: \$8,395,104 Actual FY15: \$8,466,220 Actual FY16: \$8,942,439 Actual FY17: \$10,023,838 Actual FY18: \$10,730,425 Actual	CAFR documents and information reported by Town
2017 Mill Rate /Equalized Mill Rates 2016/2018	Tolland Ranks 39 th in Connecticut for Equalized Mill Rate (2017) Tolland Ranks 23 rd out of 38 in the Capitol Region for Equalized Mill Rate	Municipal Financial Indicators – OPIM–CT gov

BOE BUDGETS 6 year trend	Year	Adopted Budget BOE	% Change	Town Budget Documents – Budget at Referendum/ Appropriation
	2013-2014	\$36,059,250	1.00%	
	2014-2015	\$37,189,581	3.13%	
	2015-2016	\$38,275,831	2.92%	
	2016-2017	\$39,333,948	2.76%	
	2017-2018	\$39,333,948	0.00%	
	2018-2019	\$39,642,607	0.78%	
	SIX YEAR AVERAGE		1.78%	
Bond Rating	AAA (Standard and Poors and Fitches)			Office of Policy and Management
Per Pupil Expenditure	FY18 Tolland is 147 out of 166 in Per Pupil Expenditure (one of the lowest)			CT State Department of Education Bureau of Fiscal Services January 2019 Release (2017-2018 data)
	<p>The chart displays per pupil expenditures for 166 districts. Tolland is positioned near the bottom of the chart, indicating a low expenditure relative to other districts. A red arrow points to the bar for Tolland, which is labeled with the value 147. The y-axis represents expenditure in dollars, ranging from 5,000 to 45,000. The x-axis lists various districts, including Sharon, Kent, Salisbury, District No. 11, Bloomfield, Essex, Eastford, Easton, District No. 13, Sherman, Deep River, Killingly, Orange, Pomfret, District No. 15, Guilford, Newington, Avon, Newtown, Farmington, Berlin, Hebron, North Branford, East Hampton, North Stonington, Waterbury, Granby, Montville, New Milford, Ledyard, Southington, Ellington, and Danbury. A legend indicates 'Series: "NCEP" Point: "TOL".'</p>			

Data Points Continued

Teacher Compensation Comparison Data	2018-2019 on 10/12 considerations Tolland Teachers are paid in the lower third of the DRG and County			Review of District Information Contract Settlements
	Teacher Compensation Comparative Data 2018-2019			
	DRG 2018-2019 (Out of 30 districts)			
	Degree Held	Rank (based on those at minimum step)	Rank (based on those at Maximum step)	
	Bachelors	24/30	30/30 (lowest)	
	Masters	26/30	19/30	
	Sixth Year	30/30 (lowest)	17/30	
	Tolland County (Out of 15 districts)			
	Degree Held	Rank (based on those at minimum step)	Rank (based on those at Maximum step)	
	Bachelors	12/15	15/15 (lowest)	
Masters	12/15	6/15		
Sixth Year	15/15 (lowest)	5/15		
Tolland compensates its teachers in the top half in TWO out of TWELVE considerations for DRG and County				
Tolland compensates its teachers in the bottom half or third in TEN out of TWELVE considerations.				
When a teacher is interviewed for hire in the district compensation is set per contract at the "step" that equates to their years of experience. On a number of occasions the "step" in Tolland, due to freezes and CBA's, is lower than the district of their current employment. This impacts Tolland's competitiveness in acquiring candidates.				

Class Size	FY19 Average Class Sizes		Actual Enrollment Using Oct 1 Enrollment
	Grade	Overall Average	
	K	21	
	1		
	2		
	3	25	
	4		
	5		
	6	22	
	7		
8			
9-12	23		
AVG	23		

FTE Teacher Position loss (non-grant) from FY2009 to FY2019	FY09 to FY19 Reduction of 39 Teaching Staff FY09 to FY19 Enrollment: -744	District data
---	--	---------------

Tolland income distribution 2017

Subject	Tolland town, Tolland County, Connecticut									
	Households		Families		Married-couple families		Nonfamily households			
	Estimate	Margin of Error	Estimate	Margin of Error	Estimate	Margin of Error	Estimate	Margin of Error	Estimate	Margin of Error
Total	5,092	+/-185	4,152	+/-183	3,682	+/-205	940	+/-217		
Less than \$10,000	1.9%	+/-1.3	0.0%	+/-0.8	0.0%	+/-0.9	10.4%	+/-6.5		
\$10,000 to \$14,999	0.3%	+/-0.4	0.3%	+/-0.5	0.4%	+/-0.6	0.0%	+/-3.4		
\$15,000 to \$24,999	3.2%	+/-1.7	1.3%	+/-1.1	1.2%	+/-1.2	11.6%	+/-6.9		
\$25,000 to \$34,999	5.1%	+/-2.0	2.7%	+/-1.5	1.1%	+/-1.4	15.6%	+/-8.3		
\$35,000 to \$49,999	5.0%	+/-2.3	4.7%	+/-2.3	4.8%	+/-2.5	6.4%	+/-5.1		
\$50,000 to \$74,999	10.6%	+/-3.0	12.1%	+/-3.8	8.3%	+/-2.8	12.0%	+/-7.3		
\$75,000 to \$99,999	16.5%	+/-3.9	13.1%	+/-3.8	12.5%	+/-4.0	23.4%	+/-10.5		
\$100,000 to \$149,999	23.9%	+/-4.2	26.4%	+/-4.8	28.3%	+/-5.1	18.8%	+/-9.0		
\$150,000 to \$199,999	17.0%	+/-3.4	19.5%	+/-3.8	21.9%	+/-4.0	1.7%	+/-2.6		
\$200,000 or more	16.5%	+/-3.5	20.0%	+/-4.2	21.4%	+/-4.6	0.0%	+/-3.4		
Median income (dollars)	112,740	+/-6,609	130,345	+/-9,800	139,038	+/-6,340	60,391	+/-24,950		
Mean income (dollars)	136,489	+/-9,604	151,938	+/-11,516	N	N	63,226	+/-9,620		
PERCENT ALLOCATED										
Household income in the past 12 months	25.9%	(X)	(X)	(X)	(X)	(X)	(X)	(X)	(X)	(X)
Family income in the past 12 months	(X)	(X)	25.6%	(X)	(X)	(X)	(X)	(X)	(X)	(X)
Nonfamily income in the past 12 months	(X)	(X)	(X)	(X)	(X)	(X)	(X)	23.2%	(X)	(X)

Did you know?

There was a POCD study/presentation done by Gorman and York!



From the October 2018 Meeting:

https://www.tolland.org/sites/tollandct/files/uploads/public_meeting_-_tolland_economic_development_-_10-15-18.pdf

Link to the January 28, 2019 Meeting:

https://www.tolland.org/sites/tollandct/files/uploads/pzc_meeting_-_conservation_-_01-28-19.pdf

Link to February 25, 2019 Meeting & Draft Vision Statement:

https://www.tolland.org/sites/tollandct/files/uploads/pzc_meeting_-_a_vision_for_tolland_-_02-20-19.pdf

Get the 2019 Plan of Conservation and Development Full Update!

<https://www.tolland.org/planning-development/pages/2019-plan-conservation-development-update>

[Back to Top](#)

Community Learning Workshops

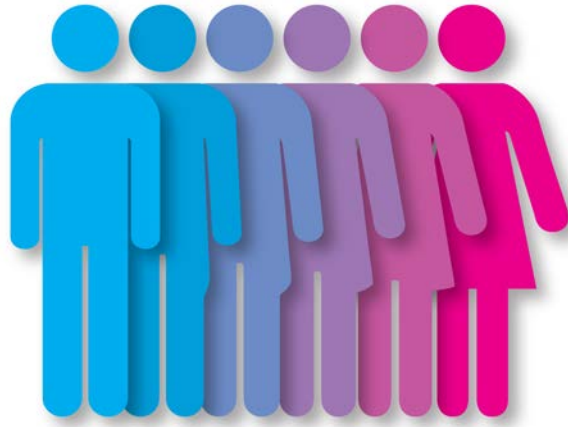
Let's talk about Gender

April 8, 2019

DATE: April 8, 2019

Location-Tolland Public Library Program Room

Time - 7:30 PM



We now have an (ever-evolving) language to describe ourselves and our experiences of gender. Cisgender, transgender, non-binary, genderqueer, gender fluid, gender creative, gender expansive and many more. It can feel like we are learning a whole new language – and in some ways we are. What does this diversity of identity and expression mean for parents and children? For schools? Bring your curiosity and your questions for this lively discussion about the language, meaning and significance of gender for ourselves and others.

Presented by:

Robin P. McHaelen, MSW is the Executive Director of True Colors, Inc. She has co-authored two books and several articles on LGBTQ youth and is a nationally recognized thought leader. Robin is the recipient of numerous awards including the 2016 CCSU Women of Influence Award, the 2014 HRC Upstander Award, the 2011 UCONN Award for Excellence in Public Engagement; 2008 National Education Association’s Award for Creative Leadership in Human Rights and the 2008 Social Worker of the Year (NASW, CT Chapter). In 2017 she was named the Advocates’, 50 States; 50 Heroes for Connecticut.

[Back to Top](#)

HOW TO CONTACT THE SUPERINTENDENT:



Please take a look at the link below for some of the best ways to get an answer, meeting, or something else:

http://www.tolland.k12.ct.us/DistrictOffices/superintendent_s_corner/superintendent_wille_tt_s_page/contactme/

[Back to Top](#)

Job Postings

HELP WANTED

Food & Nutrition Services has immediate openings for substitutes, with the potential to move into a permanent part-time position. Join our team in serving nutritious healthy meals to our students and work only while your children are in school!

If interested, please contact Kim at kmecteau@tolland.k12.ct.us or 860-870-6853, Ext

SUBSTITUTES ARE NEEDED DISTRICT WIDE

We need teacher, paraprofessional, custodial and food service substitutes.

You can choose what, where and how often you want to work.

Paper applications are available at the BOE office or can be printed from our website

www.tolland.k12.ct.us

Under District/Human Resources/Substitute Forms

Food service applications are under District/Human Resources/Employment Opportunities or feel free to call Kim Mecteau at 860-870-6850.

If you are not interested, do you know someone that might be such as a college student or retired family member. Please send them our way.

[Back to Top](#)

Links

[Tolland Recreation Department 2019 Summer Camp](#)

[Tolland's Hot Chocolate House](#)

[Channel 3 Kids Camp!](#)

[RAGE Robotics - 1st Competition of the Year](#)

[Tolland Public Library Foundation's Teen Poetry Celebration](#)

[Spring Break Lifeguard Course-Star Hill](#)

[2019 Prom Angels](#)

[Tolland Little League Baseball & Softball Registration Now Open](#)

[Tolland High School Booster Club Fundraiser-Board & Brush](#)

[Eastern Soccer Camps](#)

[2019 T-Shirt Contest-Cider Mill](#)

[HVCC Walk for Mental Health Awareness](#)

[Tolland Soccer Club Spring Registration](#)

[Project Graduation-Bottle Drive](#)

[Trooper Stephen Davis Memorial \\$1,000 Scholarship](#)

[Back to Top](#)

Mastery Learning Information

Check out the ML Plan for the Tolland Public Schools below:

http://www.tolland.k12.ct.us/DistrictOffices/superintendent_s_corner/superintendent_willett_s_page/mastery_based_learning/

[Back to Top](#)

Power School and Unified Classroom Resources



Since February 2018, Tolland Public Schools began to use PowerSchool's Unified Classroom. Unified Classroom provides a comprehensive look at student growth and achievement, while providing a single sign-on opportunity for parents with multiple students in the district.

While the mobile app has not changed (Unified Classroom access does not change your mobile app access) and can still be used, the computer-based version of Unified Classroom provides a more detailed view, and we recommend that parents use both tools to gain knowledge about their student.

For directions on how to set up your Unified Classroom account, if you haven't already, you may always visit the Tolland Public School's website or any of the school websites and click PowerSchool in the upper right-hand corner.

If you have already created your Unified Classroom account and can successfully log in at classroom.powerschool.com, you do not need to do anything further. If at any time you need to reset your password, you may do this yourself using the Forgot Password option on the sign in page.

New to Unified Classroom or PowerSchool

If you have created a PowerSchool account but have not created your Unified Classroom account OR are new to PowerSchool:

1. Instructions to [Create Parent PowerSchool and Unified Classroom ID](#)
2. Link to the begin creating your account: [Tolland Student and Parent Portal](#)

Please feel free to contact the Educational Technology office with any login issues or questions at (860) 870-6818 x10804.

[Back to Top](#)

Social Media Connections and Links

CHECK US OUT ON FACEBOOK:



www.facebook.com/tollandpublicschools

FOLLOW SUPERINTENDENT WILLETT ON TWITTER:



Search for:

[Back to Top](#)

Volunteer Information

VOLUNTEERING



We would love to have you come and volunteer at the Tolland Public Schools!

Thank you for all you do for the Tolland Public Schools. Please contact the Central Office with any questions. For those already volunteering, and those new to the game, the BOE will now do background checks every three school years. If you will be volunteering for the first time in the upcoming school year, please complete the [online form under Quick Links](#). After you have submitted your application, please call 860-870-6850 extension 1 to provide your social security number. You can check with the school secretaries to verify your status.

[Back to Top](#)

Snow Delays and Cancellations

Dear Parent or Guardian:

I want to take this opportunity to inform you of the District's procedures regarding school closings, delays, and early dismissals.

The decision to change school schedules is made after careful review of information collected from the local police, highway and school maintenance departments as well as a local weather service. Road conditions, sidewalk status, precipitation, temperatures and forecasts are considered when making a determination to delay or close schools. In some circumstances, a delay may be upgraded to a school closing. Information related to delayed openings and school closures is broadcasted on television and radio stations typically by 5:45 a.m. The safety of our children is the priority factor in all decision making.

BLACKBOARD CONNECT 5

The *Blackboard Connect 5* communication system is a telephone messaging service that the district uses which enables us to personally communicate with parents and staff regarding emergency situations, school closings and delays, school events and other important issues impacting you and your children. It is imperative that you keep a current emergency telephone number listed at your child's school building.

In the event of an early dismissal or delay, a Blackboard message will be broadcast to all families by 5:45 a.m. During an emergency or weather related incident, calls will be made through the emergency mode to all student numbers in the Blackboard system.

DELAYED OPENINGS

- This year we will utilize a two (2) hour delay.
- There is no morning (am) Birch Grove preschool classes on delayed openings.
- Buses will arrive at stops approximately two (2) hours later than the usual time.

EARLY DISMISSAL

- An announcement will be made on the radio and television stations, generally prior to 11:00 a.m.
- The high school is released at approximately 10:45 a.m. Tolland Middle School is released at 11:45 am and Tolland Intermediate and Birch Grove Primary School are released at 12:45 pm. (Please note that unusual circumstances may dictate an earlier dismissal.)
- There are no p.m. Birch Grove pre-school classes on early dismissal days.

In the event of school closings or early dismissals, all sporting events and student activities will be cancelled.

TRANSPORTATION REGULATIONS

Students in grades PreK-5 will be returned to school in the event an adult is not present at the bus stop to meet them unless you have signed the bus stop release form.

ALL STORM ANNOUNCEMENTS

Announcements will be made on the following TV Stations:

WTNH

WFSB

WVIT

WTIC

It is the parent/guardian's responsibility to monitor weather related delays, closings, and early dismissals and to cooperate with school personnel as we work to ensure student safety.

TOLLAND FAMILY RESOURCE CENTER'S INCLEMENT WEATHER PROCEDURES

If the Tolland Public School is closed due to inclement weather then the Tolland Family Resource Center is closed.

Weather delays and early closings

FRC School Age Care

The Before School Program will follow the School System for delays:

* 2 hour delay the FRC opens at 9:00 a.m. for children registered in the before school program for that day. (This is to allow enough time for the parking lot and sidewalks to be treated)

Early Dismissal

When there is an early dismissal due to inclement weather the FRC will close at 3:45 p.m. However, if Birch Grove and Tolland Intermediate School closes before 1:20 p.m. then FRC will close 2 hours after the end of school; example if Birch Grove/TIS close at 11:00 a.m. then FRC will close at 1:00 p.m.

Late fee pick up fees apply on early dismissals. Please call if you are delayed for any reason.

FRC Preschool

If Tolland Public Schools has a **delayed opening** due to weather, FRC morning preschool will open at 11:00 a.m. and will run until 12: 00 p.m. Four Year Old FRC afternoon Preschool will start at 12:00 p.m.

If Tolland Schools has an **early dismissal**, the afternoon Four-Year-Old FRC Preschool will be cancelled.

FRC Preschool Enrichment

If Tolland Public Schools has a **delayed opening** due to weather, FRC Preschool Enrichment will open at 11:00 a.m. and will run until 1: 30 p.m. If school **closes early** Preschool Enrichment will close at 12:00 P.M.

FRC Play groups are cancelled on delays or early closings.

Finally, I want to assure you, once again, that our primary concern in calling a school delay, early dismissal or closure is always the safety of our children. If parents feel conditions are unsafe, they should use their discretion and keep their children at home. Here's hoping for a warm and uneventful winter!

Sincerely,



Walter Willett, PhD
Superintendent of Schools

Other Information

C.E.R.T. Training Series Planned for April

Tolland Emergency Management is planning to conduct a free Community Emergency Response Team (C.E.R.T) training series beginning in April.

This Disaster Preparedness series includes 5 weeknight classes, meeting on Thursdays from 6:30p.m. to 9:00p.m., and 3 four-hour Saturday classes as part of the training schedule. Please Note: Participants must attend all eight classes.

Topics Include:

- Disaster Preparedness and Psychology
- Fire Safety

- Medical Operations
- Light Search & Rescue
- Terrorism

Concepts and skills learned during this series will better prepare you for disasters and emergencies.

If you are interested in this opportunity please email keuliano@tolland.org. Please provide your name, address, telephone number when making contact. Once the dates are set, you will be contacted first!

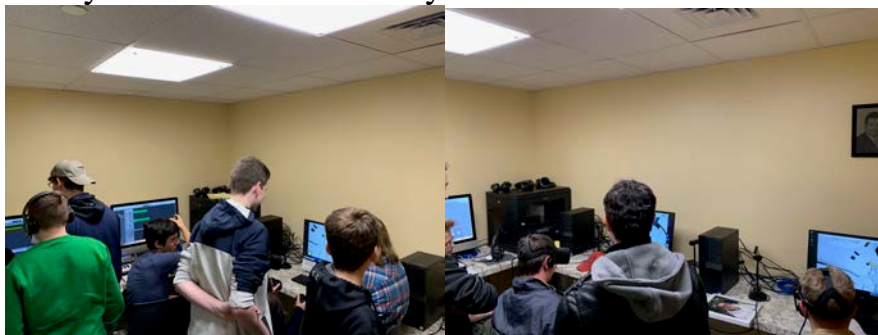
C.E.R.T. participants learn valuable skills such as: How to recognize hazards that are most likely to affect your home, workplace, and neighborhood, steps you can take to prepare for a disaster, identifying and reducing potential fire hazards in your home and what to do when disaster strikes.

C.E.R.T. participants also learn how to: Assist Emergency Management and First Responders in meeting the needs of the community during disasters and learn to be part of an important team serving the community.

We must have a minimum of 15 participants in order to conduct this beneficial series. All classes are free and will be held at the Tolland Fire Department Training Center located at 191 Merrow Road, Tolland, Connecticut. Please consider joining your friends and neighbors in this unique opportunity. Residents and non-residents are welcome to participate. Seats will be reserved on a first-come, first-served basis.

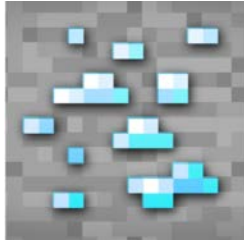
CHECK OUT THE DAVID E. GOLDEN DISCOVERY LAB!

A bus will take you there! Check with your school for the afternoon library bus!



<https://youtu.be/HSU-6tNfSWg>





There is something *incredibly cool* happening at the **Tolland Public Library. *The David E. Golden Discovery Center***. The Golden GC has been made possible by the Tolland Education Foundation, and is to be dedicated in the memory of David E. Golden, a leader in the community and former President of the Tolland Education Foundation. The lab is open to the public and contains technology not available to the average person. The midi and music resources, video editing and production software, game construction software, and Oculus Virtual Reality stations (with software) make this lab one of the most cutting edge in the State of Connecticut. Call the library in advance or stop by to sign up for using this lab!

[Back to Top](#)