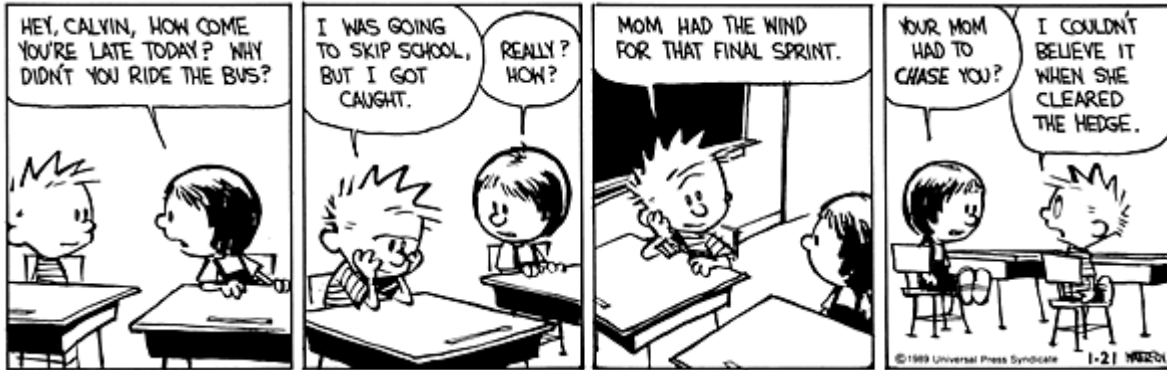


TPS SUPERINTENDENT BULLETIN



Where Excellence Is Achieved Through Each Individual's Success



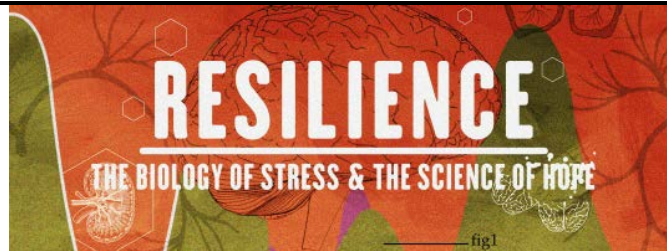
UPDATE FOR January 28, 2019

JUMP TO SCHOOL UPDATES:

Please **CLICK BELOW** to get the **DIGITAL BACKPACK** information for the listed school:

- [BG](#)
- [TIS](#)
- [TMS](#)
- [THS](#)

Here for you 860-335-2455



EVENT DATE: February 6, 2019

Please register by January 30, 2019

COURSE ID: 1825300407 COST: None SPONSORED BY: Tolland Public Schools

Location- Tolland Public Library Program Room

Time - 7:00 - 9:00 PM

REGISTER HERE!

<http://registereastconn.org/courses/view/id/16018>

Scroll Down for *more info*

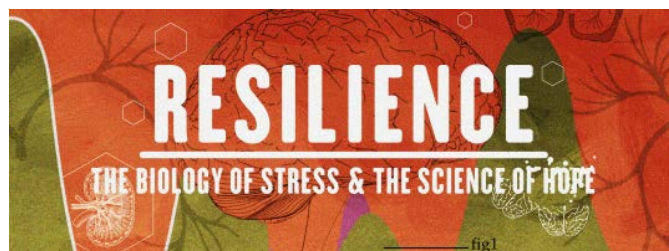
You're invited to register for a screening of the documentary Resilience. Join EASTCONN's Diane Dugas, Director of the Center for Educational Leadership in a review of the documentary Resilience and a café style discussion afterwards. This powerful, one-hour documentary delves into the science of Adverse Childhood Experiences (ACEs) and the growing efforts to treat and prevent Toxic Stress, now understood to be one of the leading causes of many health issues, from heart disease and cancer to substance abuse and depression, anxiety and suicide. Research has shown that extremely stressful experiences in childhood can alter brain development and have lifelong effects on behavior. However, as experts and practitioners profiled in Resilience prove, what's predictable is also preventable. In this documentary, they dare to talk about the effects of divorce, abuse, neglect and poverty, with the hope that science can help us break the cycle of adversity and disease.

AUDIENCE: Parents, Community Members, Town Officials, Healthcare Providers, Childcare Providers, Community Agencies, Businesses, Educators

Table of Contents

Feature Link (click a link to jump to a section)	Description
<u>Superintendent's Weekly Message/Feature</u>	This is the weekly message from the Superintendent. It is usually around some topic related to education and/or the school system.
<u>TPSTV! Tolland Public Schools TV!</u>	This section has videos about the great things happening in the Tolland Public Schools!
<u>Breakfast with the Superintendent Dates/Times/Information</u>	This section provides information about the upcoming Superintendent's Breakfast. These are open meetings with no agenda in which the public is invited to come ask questions, and engage in conversation, about educationally relevant topics.
<u>Budget Blurb & Budget Information</u>	This section provides links and information with regard to the budget of the Tolland Public Schools.
<u>Community Learning Workshops</u>	This section provides information about upcoming workshops for the community.
<u>How to Contact the Superintendent</u>	This section provides information on the ways to communicate with the Superintendent based on urgency/level of importance.
<u>Job Postings</u>	This is a listing of jobs available at this time for the district.
<u>Links</u>	These are links provided from community members as well as links that may provide meaningful information.
<u>Mastery Learning</u>	This section has a brief synopsis of the Mastery Learning philosophy and plan for the district.
<u>Power School and Unified Classroom</u>	This section provides information to guardians and parents about how to access important resources for reviewing their child's grading, scheduling, attendance, and other information.
<u>Social Media Connections and Links</u>	This section provides information on the district social media sites.
<u>Volunteering Information</u>	This section provides information on how to Volunteer in the Tolland Public Schools.
<u>Snow Delays and Cancellations</u>	This section provides information on snow delays, cancellations.
<u>Other Information</u>	Other information submitted by school or community members.

Superintendent Weekly Message



EVENT DATE: February 6, 2019

Please register by January 30, 2019

COURSE ID: 1825300407 COST: None SPONSORED BY: Tolland Public Schools

Location- Tolland Public Library Program Room

Time - 7:00 - 9:00 PM

REGISTER HERE!

<http://registereastconn.org/courses/view/id/16018>

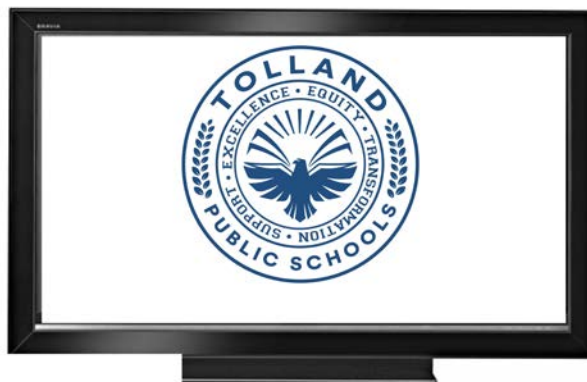
Scroll Down for *more info*

You're invited to register for a screening of the documentary Resilience. Join EASTCONN's Diane Dugas, Director of the Center for Educational Leadership in a review of the documentary Resilience and a café style discussion afterwards. This powerful, one-hour documentary delves into the science of Adverse Childhood Experiences (ACEs) and the growing efforts to treat and prevent Toxic Stress, now understood to be one of the leading causes of many health issues, from heart disease and cancer to substance abuse and depression, anxiety and suicide. Research has shown that extremely stressful experiences in childhood can alter brain development and have lifelong effects on behavior. However, as experts and practitioners profiled in Resilience prove, what's predictable is also preventable. In this documentary, they dare to talk about the effects of divorce, abuse, neglect and poverty, with the hope that science can help us break the cycle of adversity and disease.

AUDIENCE: Parents, Community Members, Town Officials, Healthcare Providers, Childcare Providers, Community Agencies, Businesses, Educators

[Back to Top](#)

Tolland Public Schools TV!



http://www.tolland.k12.ct.us/t_p_s_television

Check out some of our new TPS Television Videos!

Video link	Description
https://youtu.be/XgC0UWoTCVI	SPIRE - Check out the TPS Phonics Program!
https://youtu.be/w6MYN8yob4A	A Culture of MUSIC in the Tolland Public Schools!
https://youtu.be/Y_cXdn7K-Ls	Math Haka @ TIS
https://youtu.be/L6ercj6dupM	TPS Business Academy

[Back to Top](#)

BREAKFAST WITH THE SUPERINTENDENT



2018- 2019
Tolland Board of Education
51 Tolland Green
10:00 AM

February 4, 2019
March 4, 2019
April 1, 2019
May 6, 2019
June 3, 2019

[Back to Top](#)

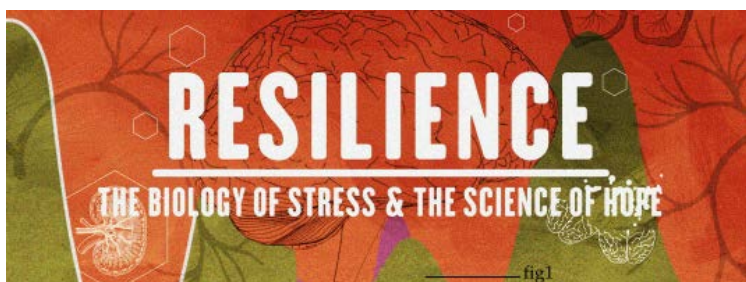
BUDGET BLURB

BUDGET INFO ON THE WEB:



http://www.tolland.k12.ct.us/board_of_education/budget

[Back to Top](#)



EVENT DATE: February 6, 2019

You're invited to register for a screening of the documentary Resilience. Join EASTCONN's Diane Dugas, Director of the Center for Educational Leadership in a review of the documentary Resilience and a café style discussion afterwards. This powerful, one-hour documentary delves into the science of Adverse Childhood Experiences (ACEs) and the growing efforts to treat and prevent Toxic Stress, now understood to be one of the leading causes of many health issues, from heart disease and cancer to substance abuse and depression, anxiety and suicide. Research has shown that extremely stressful experiences in childhood can alter brain development and have lifelong effects on behavior. However, as experts and practitioners profiled in Resilience prove, what's predictable is also preventable. In this documentary, they dare to talk about the effects of divorce, abuse, neglect and poverty, with the hope that science can help us break the cycle of adversity and disease.

Register by January 30, 2019

COURSE ID: 1825300407 COST: None SPONSORED BY: Tolland Public Schools

AUDIENCE: Parents, Community Members, Town Officials, Healthcare Providers, Childcare Providers, Community Agencies, Businesses, Educators

Location- Tolland Public Library Program Room

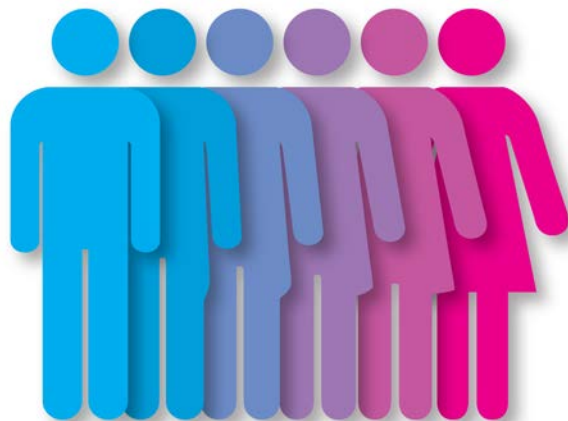
Time - 7:00 - 9:00 PM

REGISTER HERE!

<http://registereastconn.org/courses/view/id/16018>

Let's talk about Gender

April 8, 2019



We now have an (ever-evolving) language to describe ourselves and our experiences of gender. Cisgender, transgender, non-binary, genderqueer, gender fluid, gender creative, gender expansive and many more. It can feel like we are learning a whole new language – and in some ways we are. What does this diversity of identity and expression mean for parents and children? For schools? Bring your curiosity and your questions for this lively discussion about the language, meaning and significance of gender for ourselves and others.

Presented by:

Robin P. McHaelen, MSW is the Executive Director of True Colors, Inc. She has co-authored two books and several articles on LGBTQ youth and is a nationally recognized thought leader. Robin is the recipient of numerous awards including the 2016 CCSU Women of Influence Award, the 2014 HRC Upstander Award, the 2011 UCONN Award for Excellence in Public Engagement; 2008 National Education Association's Award for Creative Leadership in Human Rights and the 2008 Social Worker of the Year (NASW, CT Chapter). In 2017 she was named the Advocates', 50 States; 50 Heroes for Connecticut.

[Back to Top](#)

HOW TO CONTACT THE SUPERINTENDENT:



Please take a look at the link below for some of the best ways to get an answer, meeting, or something else:

http://www.tolland.k12.ct.us/DistrictOffices/superintendent_s_corner/superintendent_wille_tt_s_page/c_o_n_t_a_c_t_m_e/

[Back to Top](#)

Job Postings

Job Opening

Family Resource Center

- **Preschool Group Leader - 20-25 hours per week.**
Position requires an Associate's Degree in Early Child Education or related field.
- **Senior Group Leader – Monday thru Friday 3pm to 6pm at BGP**

For more information and to apply visit our website at
www.tolland.k12.ct.us
District/Human Resources/Employment Opportunities

HELP WANTED

Food & Nutrition Services has immediate openings for substitutes, with the potential to move into a permanent part-time position. Join our team in serving nutritious healthy meals to our students and work only while your children are in school!

If interested, please contact Kim at kmecteau@tolland.k12.ct.us or 860-870-6853, Ext

SUBSTITUTES ARE NEEDED DISTRICT WIDE

We need teacher, paraprofessional, custodial and food service substitutes.

You can choose what, where and how often you want to work.

Paper applications are available at the BOE office or can be printed from our website

www.tolland.k12.ct.us

Under District/Human Resources/Substitute Forms

Food service applications are under District/Human Resources/Employment Opportunities or feel free to call Kim Mecteau at 860-870-6850.

If you are not interested, do you know someone that might be such as a college student or retired family member. Please send them our way.

[Back to Top](#)

Links

[Tolland Music Apparel is Coming](#)

[Tolland Little League Baseball & Softball Registration Now Open](#)

[Join Girl Scouts in Tolland](#)

[Hidden in Plain Sight-TMS](#)

[Take Your Child to the Library Day](#)

Saturday, Feb. 2

Celebrate Take Your Child to the Library Day at the Tolland Public Library! Stop by the library to sign up for a library card, check out books and more.

Golden Discovery Center - 10:30am to 12:30pm

The Golden Discovery Center will be open to children and teens. Come experience virtual reality and music/video editing. Please call the library at (860) 871-3620 to sign up for a 30 minute time slot.

Read to a Therapy Dog - 11:00am to 12:00pm

Children of all ages can come read to a therapy dog. Not only is reading to a dog fun but it also allows children to practice their reading skills. Please call the library at (860) 871-3620 to sign up for a 15 minute time slot.

Board Games - 1:00pm to 3:00pm

Game enthusiasts of all ages are invited to come play a variety of games. No registration is required.

Duct Tape Bookmarks - 2:00pm to 4:00pm

Children of all ages can stop by between 2pm and 4pm to make a duct tape bookmark. No registration is required, while supplies last.

[Back to Top](#)

Mastery Learning Information

Check out the ML Plan for the Tolland Public Schools below:

http://www.tolland.k12.ct.us/DistrictOffices/superintendent_s_corner/superintendent_willett_s_page/mastery_based_learning/

[Back to Top](#)

Power School and Unified Classroom Resources



Since February 2018, Tolland Public Schools began to use PowerSchool's Unified Classroom. Unified Classroom provides a comprehensive look at student growth and achievement, while providing a single sign-on opportunity for parents with multiple students in the district.

While the mobile app has not changed (Unified Classroom access does not change your mobile app access) and can still be used, the computer-based version of Unified Classroom provides a more detailed view, and we recommend that parents use both tools to gain knowledge about their student.

For directions on how to set up your Unified Classroom account, if you haven't already, you may always visit the Tolland Public School's website or any of the school websites and click PowerSchool in the upper right-hand corner.

If you have already created your Unified Classroom account and can successfully log in at classroom.powerschool.com, you do not need to do anything further. If at any time you need to reset your password, you may do this yourself using the Forgot Password option on the sign in page.

New to Unified Classroom or PowerSchool

If you have created a PowerSchool account but have not created your Unified Classroom account OR are new to PowerSchool:

1. Instructions to [Create Parent PowerSchool and Unified Classroom ID](#)
2. Link to the begin creating your account: [Tolland Student and Parent Portal](#)

Please feel free to contact the Educational Technology office with any login issues or questions at (860) 870-6818 x10804.

[Back to Top](#)

Social Media Connections and Links

CHECK US OUT ON FACEBOOK:



www.facebook.com/tollandpublicschools

FOLLOW SUPERINTENDENT WILLETT ON TWITTER:



Search for:

[TPS Sup Willett](#)

Or

[Superint. Willett](#)

[Back to Top](#)

Volunteer Information

VOLUNTEERING



We would love to have you come and volunteer at the Tolland Public Schools!

Thank you for all you do for the Tolland Public Schools. Please contact the Central Office with any questions. For those already volunteering, and those new to the game, the BOE will now do background checks every three school years. If you will be volunteering for the first time in the upcoming school year, please complete the [online form under Quick Links](#). After you have submitted your application, please call 860-870-6850 extension 1 to provide your social security number. You can check with the school secretaries to verify your status.

[Back to Top](#)

Snow Delays and Cancellations

Dear Parent or Guardian:

I want to take this opportunity to inform you of the District's procedures regarding school closings, delays, and early dismissals.

The decision to change school schedules is made after careful review of information collected from the local police, highway and school maintenance departments as well as a local weather service. Road conditions, sidewalk status, precipitation, temperatures and forecasts are considered when making a determination to delay or close schools. In some circumstances, a delay may be upgraded to a school closing. Information related to delayed openings and school closures is broadcasted on television and radio stations typically by 5:45 a.m. The safety of our children is the priority factor in all decision making.

BLACKBOARD CONNECT 5

The *Blackboard Connect 5* communication system is a telephone messaging service that the district uses which enables us to personally communicate with parents and staff regarding emergency situations, school closings and delays, school events and other important issues impacting you and your children. It is imperative that you keep a current emergency telephone number listed at your child's school building. In the event of an early dismissal or delay, a Blackboard message will be broadcast to all families by 5:45 a.m. During an emergency or weather related incident, calls will be made through the emergency mode to all student numbers in the Blackboard system.

DELAYED OPENINGS

- This year we will utilize a two (2) hour delay.
- There is no morning (am) Birch Grove preschool classes on delayed openings.
- Buses will arrive at stops approximately two (2) hours later than the usual time.

EARLY DISMISSAL

- An announcement will be made on the radio and television stations, generally prior to 11:00 a.m.

- The high school is released at approximately 10:45 a.m. Tolland Middle School is released at 11:45 am and Tolland Intermediate and Birch Grove Primary School are released at 12:45 pm. (Please note that unusual circumstances may dictate an earlier dismissal.)
- There are no p.m. Birch Grove pre-school classes on early dismissal days.

In the event of school closings or early dismissals, all sporting events and student activities will be cancelled.

TRANSPORTATION REGULATIONS

Students in grades PreK-5 will be returned to school in the event an adult is not present at the bus stop to meet them unless you have signed the bus stop release form.

ALL STORM ANNOUNCEMENTS

Announcements will be made on the following TV Stations:

WTNH

WFSB

WVIT

WTIC

It is the parent/guardian's responsibility to monitor weather related delays, closings, and early dismissals and to cooperate with school personnel as we work to ensure student safety.

TOLLAND FAMILY RESOURCE CENTER'S INCLEMENT WEATHER PROCEDURES

If the Tolland Public School is closed due to inclement weather then the Tolland Family Resource Center is closed.

Weather delays and early closings

FRC School Age Care

The Before School Program will follow the School System for delays:

* 2 hour delay the FRC opens at 9:00 a.m. for children registered in the before school program for that day. (This is to allow enough time for the parking lot and sidewalks to be treated)

Early Dismissal

When there is an early dismissal due to inclement weather the FRC will close at 3:45 p.m. However, if Birch Grove and Tolland Intermediate School closes before 1:20 p.m. then FRC will close 2 hours after the end of school; example if Birch Grove/TIS close at 11:00 a.m. then FRC will close at 1:00 p.m.

Late fee pick up fees apply on early dismissals. Please call if you are delayed for any reason.

FRC Preschool

If Tolland Public Schools has a **delayed opening** due to weather, FRC morning preschool will open at 11:00 a.m. and will run until 12:00 p.m. Four Year Old FRC afternoon Preschool will start at 12:00 p.m.

If Tolland Schools has an **early dismissal**, the afternoon Four-Year-Old FRC Preschool will be cancelled.

FRC Preschool Enrichment

If Tolland Public Schools has a **delayed opening** due to weather, FRC Preschool Enrichment will open at 11:00 a.m. and will run until 1: 30 p.m. If school **closes early** Preschool Enrichment will close at 12:00 P.M.

FRC Play groups are cancelled on delays or early closings.

Finally, I want to assure you, once again, that our primary concern in calling a school delay, early dismissal or closure is always the safety of our children. If parents feel conditions are unsafe, they should use their discretion and keep their children at home. Here's hoping for a warm and uneventful winter!

Sincerely,

A handwritten signature in black ink that reads "Walter Willett". The signature is written in a cursive style with a large, sweeping initial "W".

Walter Willett, PhD
Superintendent of Schools

Other Information

CHECK OUT THE DAVID E. GOLDEN DISCOVERY LAB!

A bus will take you there! Check with your school for the afternoon library bus!



<https://youtu.be/HSU-6tNfSWg>



There is something *incredibly cool* happening at the **Tolland Public Library. The David E. Golden Discovery Center**. The Golden GC has been made possible by the Tolland Education Foundation, and is to be dedicated in the memory of David E. Golden, a leader in the community and former President of the Tolland Education Foundation. The lab is open to the public and contains technology not available to the average person. The midi and music resources, video editing and production software, game construction software, and Oculus Virtual Reality stations (with software) make this lab one of the most cutting edge in the State of Connecticut. Call the library in advance or stop by to sign up for using this lab!

[Back to Top](#)